

# Installation Guide

NEW HOME BUILDS



# Thanks for your time

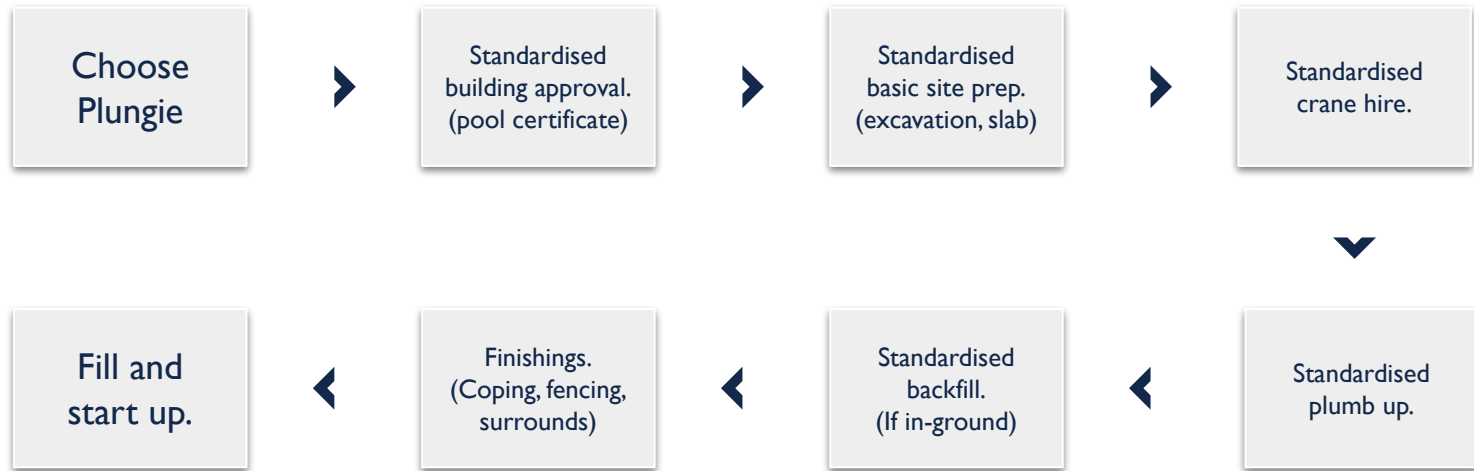
Ready to learn about the most innovative pool solution available?

Enclosed is all the information you'll need to install one of our award-winning Plungies. The process has been developed to create huge efficiencies on site, this guide will cover the following:

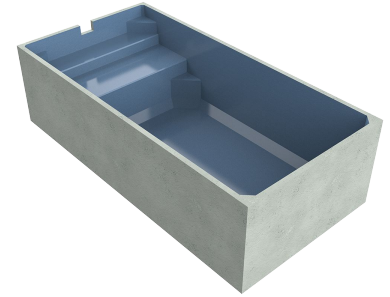
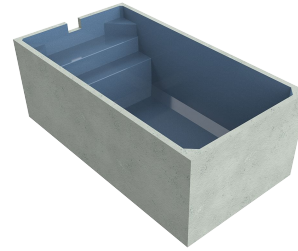
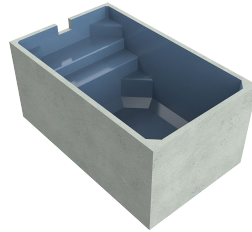
- Standard building approvals
- Basic site preparation
- Slab requirements
- Crane hire
- Standard backfill
- Plumb up
- Finishings
- Fill and start up
- Support



# The Install Process



# Choose Your Plungie



Shell dimensions

3500mm (diameter)  
x 1690mm (H)

3600mm (L) x 2200mm (W)  
x 1690mm (H)

4600mm (L) x 2500mm (W)  
x 1690mm (H)

6000mm (L) x 3000mm (W)  
x 1690mm (H)

Dry weight

7.0T

6.8T

8.6T

11.8T

**ENSURE YOU ORDER YOUR PLUNGIE WELL IN ADVANCE OF YOUR REQUIRED DELIVERY DATE**



# Standard Building Approval

## Plungie will supply you with:

Pre-engineered specifications package that covers the pool shell and prescribed standard footings, covering A, S, M, H1 and H2 site classifications.

Your state requirement compliance certificate:

- QLD - Form 15
- VIC - REG 126
- SA - REG 88
- NSW - General Design & Engineering Certificate

## You will be required to:

Submit the proposed pool plan along with your general building approvals. This generally includes:

- Compliance certificate - covering pool construction and prescribed footing per site classification (supplied by Plungie)
- All pre-engineered specifications referenced in your compliance certificate, covering pool and footings (supplied by Plungie)
- Site plan showing location of pool with reference to boundaries and structures
- Proposed fence/gate plan - this will need to comply with state pool carrier regulations
- Home warranty insurance policy noting pool installation works within the proposed building plan



# Basic Site Preparation

## Plungie will supply you with:

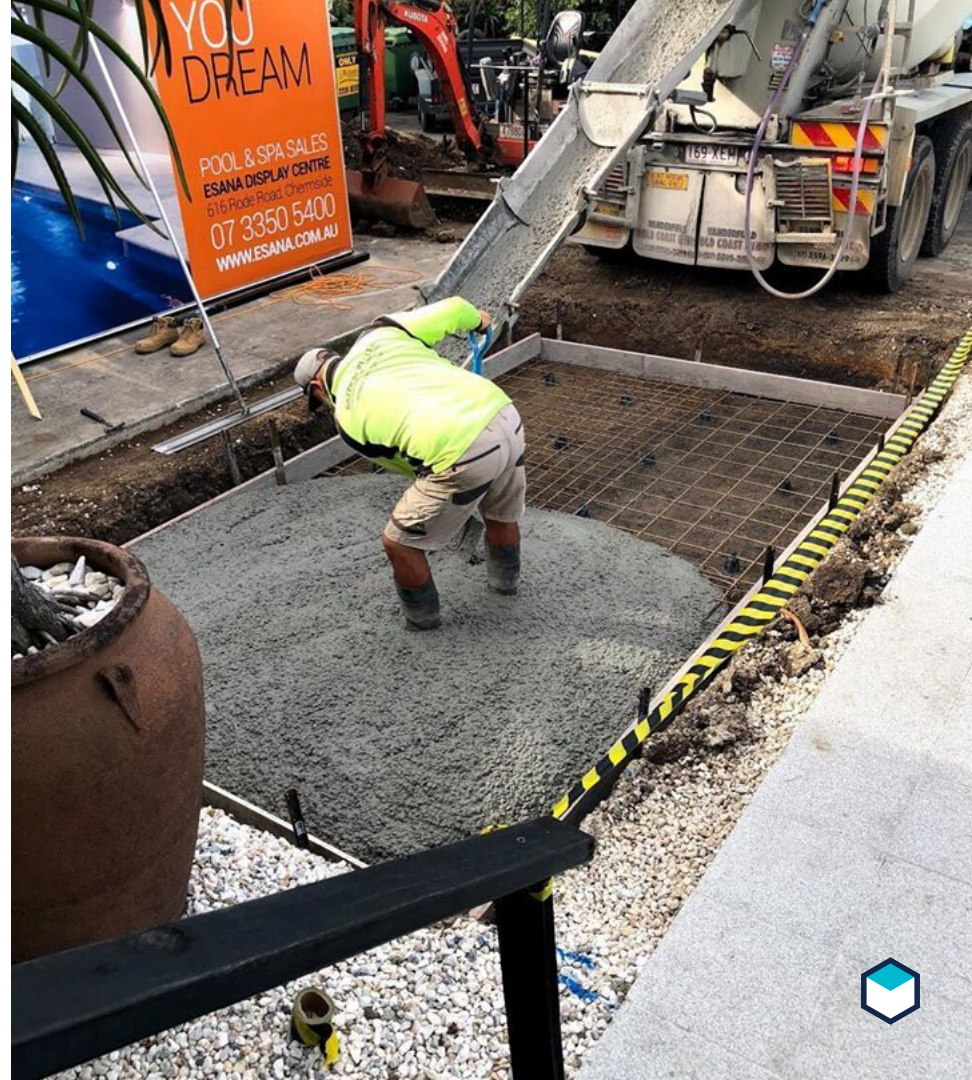
Standardised base preparation requirements for each model of pool, covering the slab specification and excavation plan

Footings preparation has been pre-engineered for all models, covering site classifications of A, S, M, H1 and H2

## You will be required to:

Complete site preparation in accordance with standardised engineering based on your site classification

Upon completion, your concrete contractor should supply certification (as required) to confirm slab footing has been prepared in accordance with the supplied pre-engineered specifications.



# Slab Requirements

	ARENA		STUDIO		ORIGINAL		MAX	
SITE CLASS	A - S - M	HI - H2	A - S - M	HI - H2	A - S - M	HI - H2	A - S - M	HI - H2
SLAB WIDTH	100mm	180mm	100mm	180mm	100mm	180mm	100mm	180mm
MESH REQUIRED	Single Layer SL72	Double Layer SL72	Single Layer SL72	Double Layer SL72	Single Layer SL72	Double Layer SL72	Single Layer SL72	Double Layer SL72
BASE SLAB DIMENSIONS	4000mm x 4000mm	4000mm x 4000mm	4000mm x 2600mm	4000mm x 2600mm	5000mm x 3000mm	5000mm x 3000mm	6500mm x 3500mm	6500mm x 3500mm
CONCRETE (m <sup>3</sup> )	2.0m <sup>3</sup>	3.4m <sup>3</sup>	1.4m <sup>3</sup>	2.4m <sup>3</sup>	2.0m <sup>3</sup>	3.2m <sup>3</sup>	2.6m <sup>3</sup>	5.0m <sup>3</sup>
MESH (m <sup>2</sup> )	15.2m <sup>2</sup>	30.4m <sup>2</sup>	9.75m <sup>2</sup>	19.5m <sup>2</sup>	14.2m <sup>2</sup>	28.4m <sup>2</sup>	21.75m <sup>2</sup>	43.50m <sup>2</sup>

ENSURE A 100MM PROVISION IS MADE IN THE SLAB FOR THE HYDROSTATIC VALVE



# Crane Hire

## Plungie will supply you with:

- Standardised lifting diagrams containing key information required for all crane hire engagement
- Plungie is delivered with the required lifting swivels
- Ongoing support to ensure accurate and easy engagement of crane hire. Crane hire companies also offer free site visits and project assessment services, which we recommend using for accurate/best practice crane engagement

## You will be required to:

- Arrange for crane hire to be on-site at point of delivery to lift pool from the delivery truck to its pre-pared footing on your site. Flatbed body trucks are utilised for deliveries within SEQ or semi-trailer for interstate deliveries
- Access plays the biggest part in the financial viability and operational ease of a Plungie inclusion, it is for this reason that we strong recommend that the Plungie is installed on site at the vacant lot / peg out or slab stage (unless access will be maintained throughout the general build).





# Standard Backfill

If the Plungie is being installed in-ground or partially in-ground, you will need to:

- Backfill the over-excavated area of the Plungie footing with any granular material that will allow for drainage away from the Plungie footing
  - Builders most commonly use low cost options such as recycled drainage gravel or recycled concrete aggregate.
  - Best practice is to arrange delivery of backfill material in 1m<sup>3</sup> Bulka Bags, from your nearest landscape/building material supplier, at time of crane hire to allow for fast and easy backfill of your Plungie.



# Standard Plumb Up

## Plungie will supply you with:

- Your Plungie will arrive pre-fitted with all primary plumbing fixtures (Skimmer box, Hydrostatic valve and filtration returns).
- A plumbing installation guide can be provided which outlines the provisions in your Plungie and how your equipment needs to be set up. Packages range from your Base equipment through to Eco and Smart options depending on your specific requirements.

## You will be required to:

- Ensure that the required power provisions are made available for the equipment package to run.
  - Standard package requires a 10amp double GPO.
- A 600mm x 900mm concrete pad with 1mtr clearance is recommended to house your equipment - if your pool is out of the ground the stair void is the perfect location.

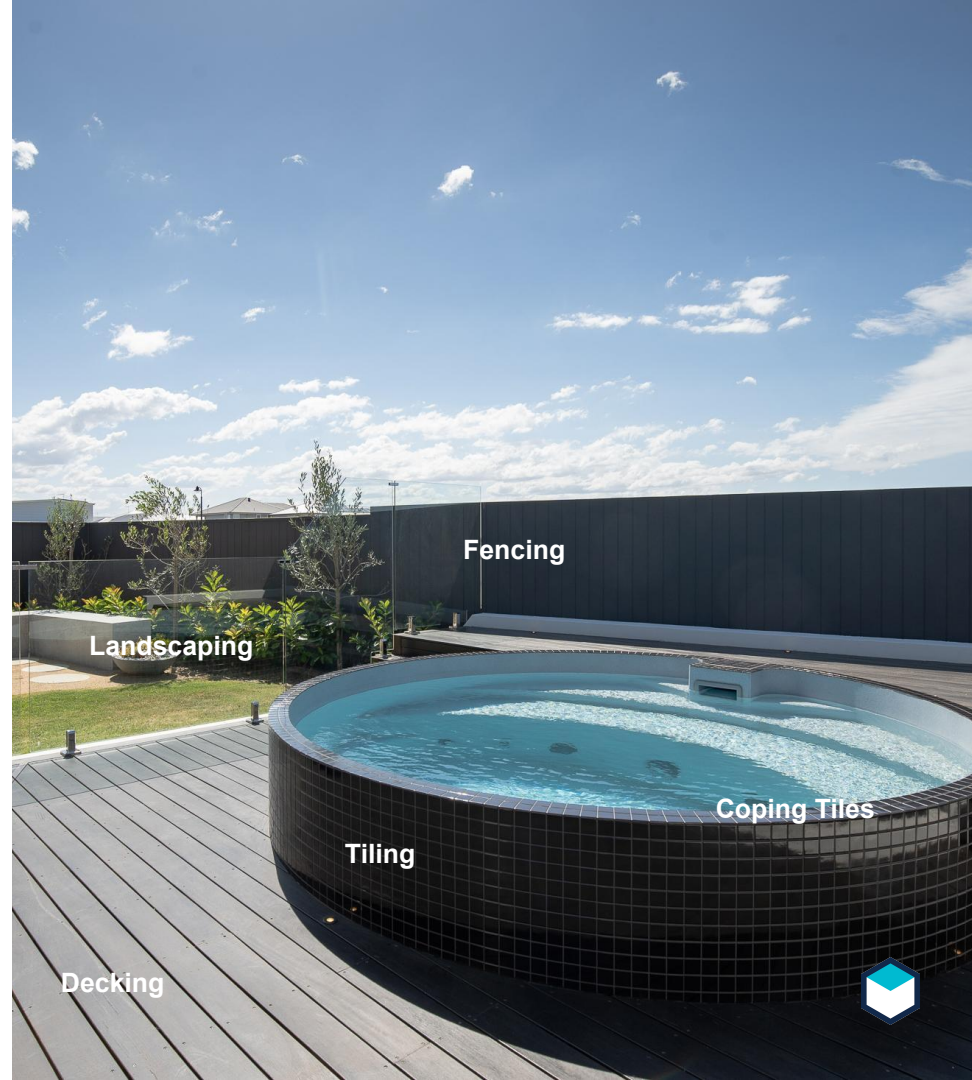


# Finishings

No longer do you need to settle for limited factory options. The Plungie is the perfect blank canvas to allow for easy on-site finishing to allow the pool to be perfectly tied to the home.

Manufactured with precision, each standardised and prescribed model allows for effective pricing of material that will enable clear engagement with any sub contractor. Confidence that only a standardised solution can deliver.

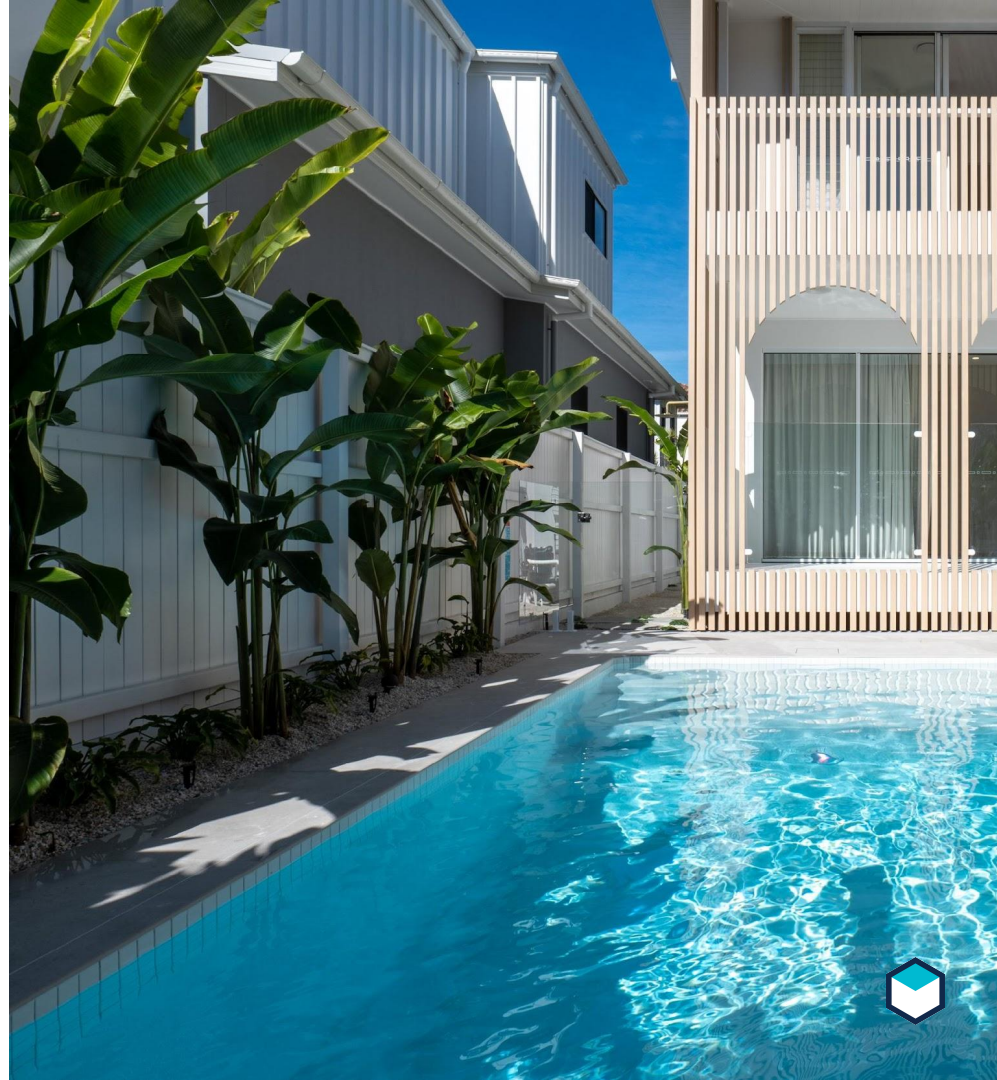
Each element, material and finish with your Plungie has been meticulously chosen, engineered and designed to allow for the fastest, easiest and most cost effective on-site works possible.



# Fill + Start Up

## You will be required to:

- Ensure that your Plungie inclusion has had final certification and inspection
- Ensure your Hydrostatic Valve (found in your skimmer box) is screwed into position just prior to your Plungie being filled.
- Arrange for pool to be filled
  - A simple garden house will fill a Plungie in anywhere from 6 - 12 hours depending on model and site water pressure.
  - Many of our builders and trade partners engage a local water delivery service which can fill a Plungie in as little as 15 minutes. A water truck delivery starts from around \$250 for 10,000L



# Support

We're here every step of the journey to ensure an easy and smooth integration of the Plungie into your project. If needed this includes regular engagement with your sales, operations and construction teams to ensure effective engagement of the program.

In addition to this direct engagement, we also have a great library of supporting documents and video tools to give further clarity around how our innovative pool solution can create huge efficiencies for you.

